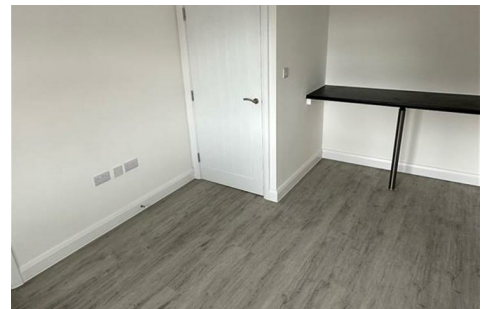


Abercorn Gardens, RM6 4TA

£1,600 Per Month



A beautifully presented brand new one-bedroom flat, ideally located in the sought-after RM6 area. Perfect for a professional couple or a parent with one child, this modern home offers comfortable living with excellent transport links and everyday amenities close by.

The property is within easy reach of Goodmayes and Newbury Park stations, providing convenient Elizabeth and Central Line services into Stratford, Liverpool Street and Central London. A wide selection of local shops, supermarkets, cafés, restaurants and bars are all just a short walk away, making this an ideal location for commuters and those who enjoy having everything on their doorstep.

The rent includes Council Tax, Water Rates and High-Speed Internet.

